

TOWN OF LEXINGTON  
11060 AL-101  
LEXINGTON, ALABAMA 35648



FOR: LEXINGTON 2024-25 PAVING PROJECT

INVITATION FOR BIDS:

Sealed bid proposals for furnishing materials, equipment or services as described herein will be received at the Town of Lexington, Town Hall, Lexington, Alabama until 10:00 AM local time on September 11, 2024 .

It is understood that the owner may accept any or all items at the prices listed in this proposal within a period of thirty (30) days after the bid date for these items. Time is of the essence to this bid and if delivery is not made within the time specified, the Town of Lexington reserves the right to cancel the order. This bid may be withdrawn at any time prior to the scheduled time for the opening of bids, or any authorized postponement thereof.

DIRECTIONS FOR MAILING BIDS:

Envelopes containing bids must be sealed, marked and addressed as follows:

ADDRESSED TO: TOWN OF LEXINGTON  
11060 AL-101  
LEXINGTON, ALABAMA 35648

BID FOR: RESURFACE VARIOUS LEXINGTON CITY STREETS

Bid will be opened in the Town Hall Meeting Room, Town Hall, Lexington, Alabama at 10:00 AM local time on September 11, 2024 .

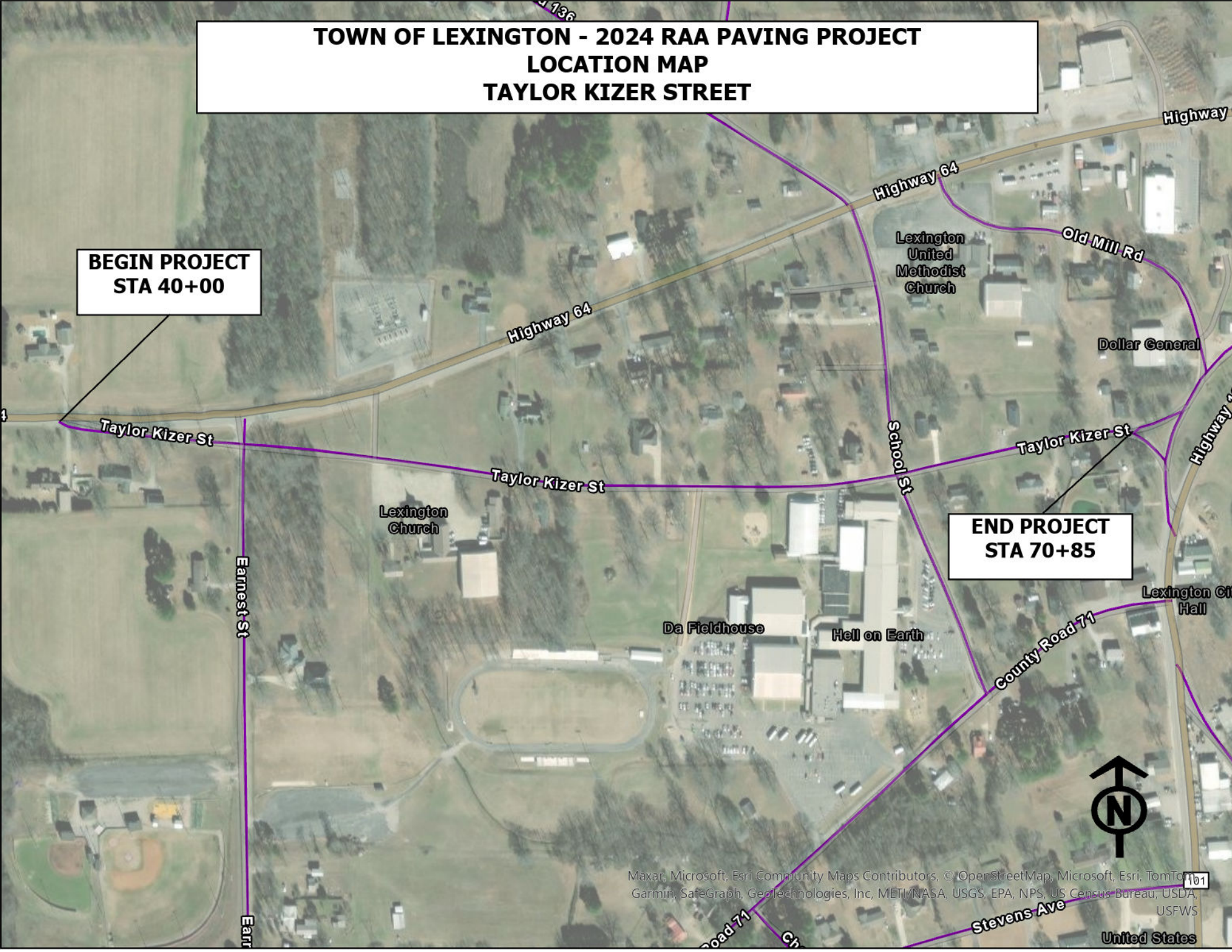
The Town of Lexington does not discriminate on the basis of race, color, natural origin, sex, religion, age or disability in employment of the provision of services.



**TOWN OF LEXINGTON - 2024 RAA PAVING PROJECT  
LOCATION MAP  
TAYLOR KIZER STREET**

**BEGIN PROJECT  
STA 40+00**

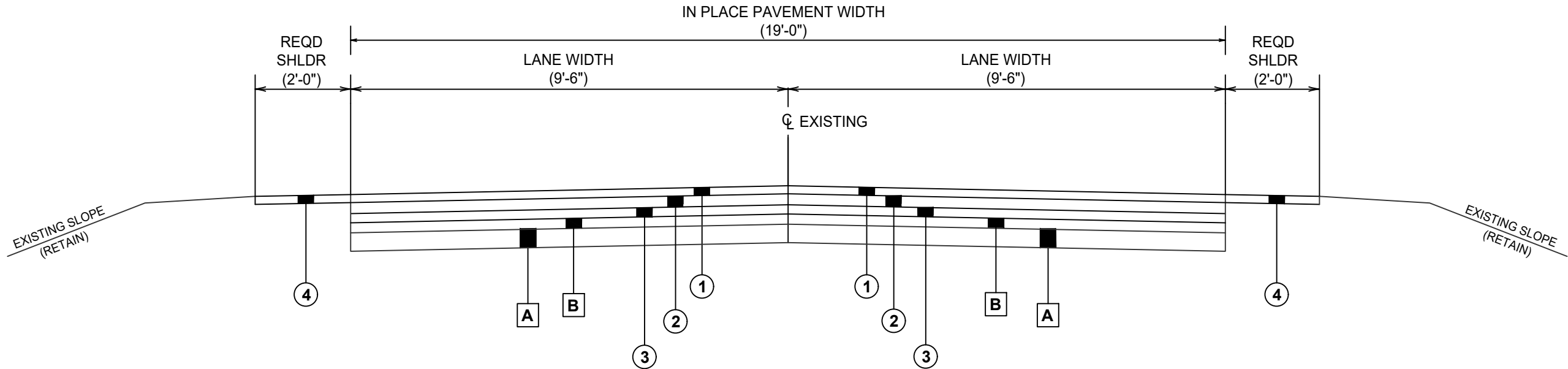
**END PROJECT  
STA 70+85**



# TYPICAL SECTIONS

**STEVENS AVENUE  
STATION 1+08 TO STATION 11+40**

## TYPICAL SECTION STEVENS AVENUE STA 1+08 TO STA 11+40



<u>LEGEND NO.</u>	<u>ITEM NO.</u>	<u>DESCRIPTION</u>
A	"IN PLACE"	EXISTING SUBGRADE / BASE (RETAIN)
B	"IN PLACE"	EXISTING ASPHALT PAVEMENT (RETAIN)
①	"REQUIRED"	424A-340 REQD ITEM NO. 424A-340 SUPERPAVE BITUMINOUS CONCRETE WEARING SURFACE LAYER, 1/2" MAXIMUM AGGREGATE SIZE MIX, ESAL RANGE A/B (APPROX. 150 LBS/SY)
②	"REQUIRED"	433A-000 SCRUB SEAL
③	"REQUIRED"	424B-666 REQD ITEM NO. 424B-666 SUPERPAVE BITUMINOUS CONCRETE LOWER BINDER LAYER, 1" MAXIMUM AGGREGATE SIZE MIX, ESAL RANGE A/B (APPROX. 300 LBS/SY) (MILL APPROX. 3" OF EX. ASPHALT PAVEMENT) (STA 1+08 TO 3+90)
④	"REQUIRED"	430B-042 AGGREGATE SURFACING (1" DOWN, CRUSHER RUN)

**PRELIMINARY**

**TYPICAL SECTION**  
STEVENS AVENUE  
LEXINGTON, AL  
LAUDERDALE COUNTY

**ELECTRONIC FILE DISCLAIMER:**  
The official drawings are those that were printed from the electronic file information transferred electronically to the client. This is not necessarily a true representation of the official document. Information on these plans in electronic form, provided verbally by others, written by others or interpreted by others.

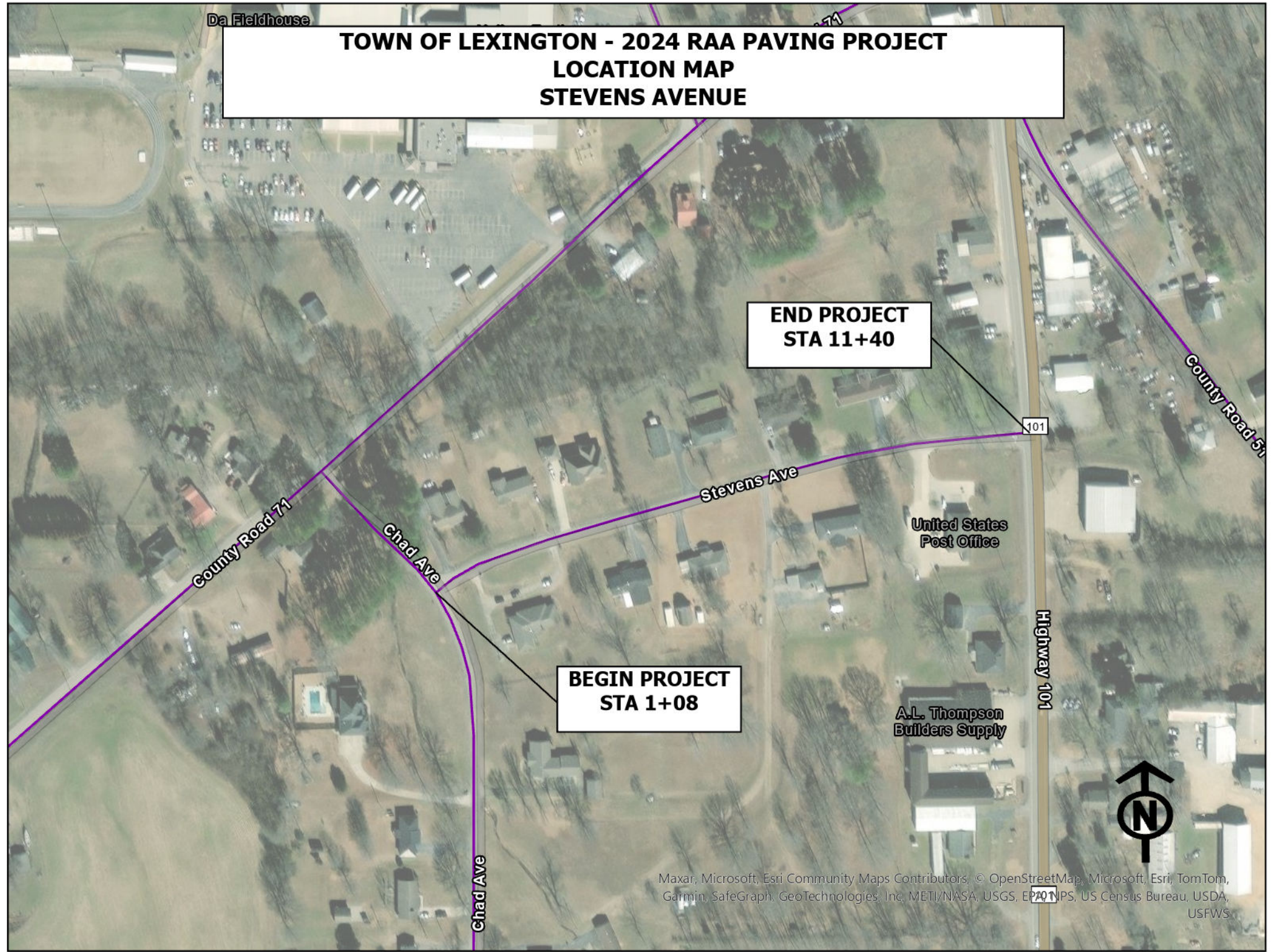
REVISIONS:

PLOTTED:	
DRAWN BY:	
CHECKED BY:	
DATE:	
SCALE:	
PROJECT NO.:	
DATE:	
DATE:	
HORIZ 1" =	N/A
VERT 1" =	N/A

**TOWN OF LEXINGTON - 2024 RAA PAVING PROJECT  
LOCATION MAP  
STEVENS AVENUE**

**END PROJECT  
STA 11+40**

**BEGIN PROJECT  
STA 1+08**

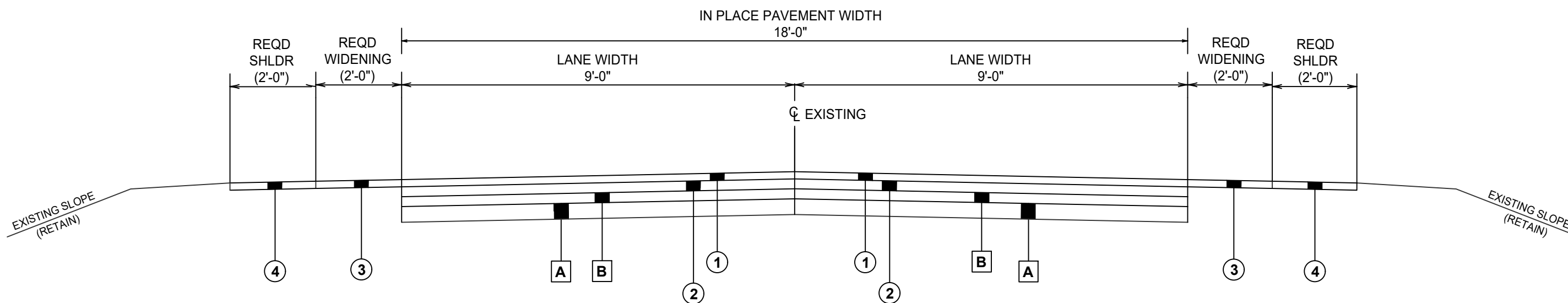


Maxar, Microsoft, Esri Community Maps Contributors, © OpenStreetMap, Microsoft, Esri, TomTom, Garmin, SafeGraph, GeoTechnologies, Inc, METI/NASA, USGS, EPA, NPS, US Census Bureau, USDA, USFWS

# TYPICAL SECTIONS

**CHAD AVENUE**  
**STATION 20+00 TO STATION 35+50**

## TYPICAL SECTION CHAD AVENUE STA 20+00 TO STA 35+50 WIDENING STA 32+42 TO 35+50



LEGEND NO.	ITEM NO.	DESCRIPTION	
A	"	"IN PLACE"	EXISTING SUBGRADE / BASE (RETAIN)
B	"	"IN PLACE"	EXISTING ASPHALT PAVEMENT (RETAIN)
①	"REQUIRED"	424A-340	REQD ITEM NO. 424A-340 SUPERPAVE BITUMINOUS CONCRETE WEARING SURFACE LAYER, 1/2" MAXIMUM AGGREGATE SIZE MIX, ESAL RANGE A/B (APPROX. 150 LBS/SY)
②	"REQUIRED"	433A-000	SCRUB SEAL
③	"REQUIRED"		REQD 2' WIDENING EACH SIDE (STA 32+42 TO STA 35+50)
④	"REQUIRED"	430B-042	AGGREGATE SURFACING (1" DOWN, CRUSHER RUN)
⑤	"REQUIRED"	424B-666	REQD ITEM NO. 424B-666 SUPERPAVE BITUMINOUS CONCRETE LOWER BINDER LAYER, 1" MAXIMUM AGGREGATE SIZE MIX, ESAL RANGE A/B (APPROX. 300 LBS/SY) (MILL APPROX. 3" OF EX. ASPHALT PAVEMENT) (STA 29+15 TO 32+18)
⑥	"REQUIRED"	424B-640	REQD ITEM NO. 424B-670 SUPERPAVE BITUMINOUS CONCRETE LOWER BINDER LAYER, PATCHING, 1" MAXIMUM AGGREGATE SIZE MIX, ESAL RANGE A/B TO BE SET ASIDE FOR PATCHING
⑦	"REQUIRED"	533A-860	36" STORMWATER PIPE (HDPE) - *PIPE EXTENSION AND CONCRETE HEADWALL REMOVAL AT STA 33+73*

**CivilGroup**  
engineering • surveying

919 EAST AVALON AVE., SUITE B  
MUSCLE SHOALS, ALABAMA 35661  
P 256.320.5082 • F 256.320.5082

PRELIMINARY

TYPICAL SECTION  
CHAD AVENUE  
LEXINGTON, AL  
LAUDERDALE COUNTY

ELECTRONIC FILE DISCLAIMER:  
The official drawings are those that were submitted for and approved by the Professional Engineer/Surveyor. Information transferred electronically to clients is not necessarily a true representation of the official document. Information on these plans in electronic form, provided verbally by others, written by others or interpreted by others.

REVISIONS:	
NO.	DESCRIPTION

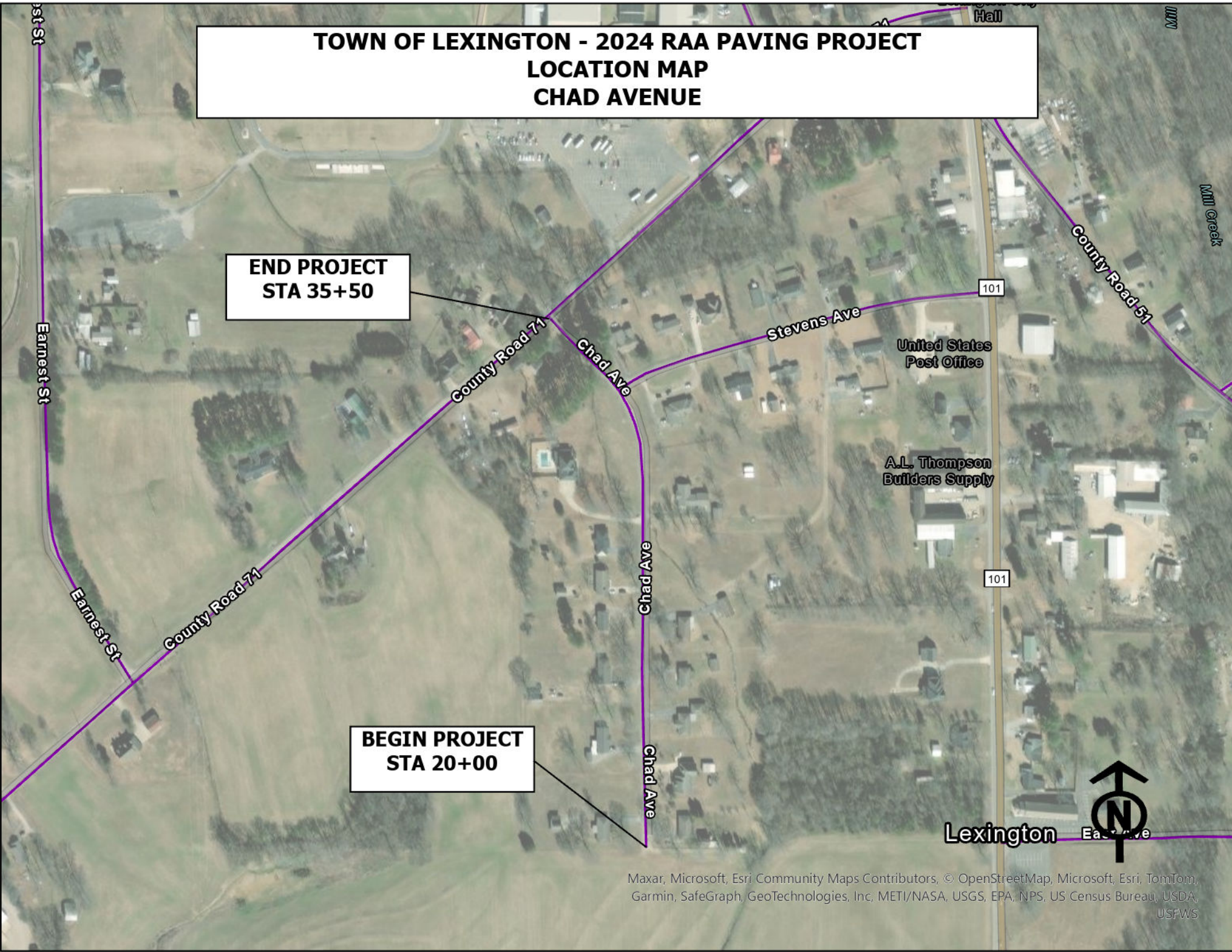
PLOTTED: DRAWN BY: CHECKED BY: DATE:	HORZ 1" = N/A VERT 1" = N/A
---	--------------------------------

SHEET  
2 OF 3

# TOWN OF LEXINGTON - 2024 RAA PAVING PROJECT LOCATION MAP CHAD AVENUE

**END PROJECT  
STA 35+50**

**BEGIN PROJECT  
STA 20+00**



## SUMMARY OF QUANTITIES

### SCOPE OF WORK: PATCHING, LEVELING, AND PLANT MIX VARIOUS STREETS IN THE TOWN OF LEXINGTON, AL

Item No.	Description	Quantity	Units
403B-000	Micro-Surfacing Seal Coat, Type II	0	Ton
401A-001	Bituminous Treatment B (Sand)	0	SQ. YD.
405A-000	Tack Coat	879	Gal
408A-052	Planing Existing Pavement (Approximately 1.10" Thru 2.00" Thick)	0	SQ. YD.
408A-053	Planing Existing Pavement (Approximately 2.10" Thru 3.00" Thick)	1,202	SQ. YD.
424A-340	Superpave Bituminous Concrete Wearing Surface Layer, 1/2" Maximum Aggregate Size Mix, ESAL Range A/B)	827	TON
424A-346	Superpave Bituminous Concrete Wearing Surface Layer, Leveling, 1/2" Maximum Aggregate Size Mix, ESAL Range A/B)	73	TON
424B-640	Superpave Bituminous Concrete Lower Binder Layer, Patching, 1" Maximum Aggregate Size Mix, ESAL Range A/B)	92	TON
424B-644	Superpave Bituminous Concrete Upper Binder Layer, Leveling, 1" Maximum Aggregate Size Mix, ESAL Range A/B)	0	TON
424B-647	Superpave Bituminous Concrete Upper Binder Layer, Widening, 1" Maximum Aggregate Size Mix, ESAL Range A/B)	0	TON
424B-666	Superpave Bituminous Concrete Lower Binder Layer, 1" Maximum Aggregate Size Mix, ESAL Range A/B)	210	TON
430B-042	Aggregate Surfacing (1" Down, Crusher Run)	375	TON
433A-000	Scrub Seal	10,992	SQ. YD.
533A-860	36" Stormwater Pipe (HDPE)	20	Lin. Ft.
600A-000	Mobilization	1	L.S.
622A-004	Manhole Covers Reset (Riser Ring Method)	11	EA
641S-500	Valve Box Reset	2	EA
701A-030	Solid White, Class 2T, Type A Traffic Stripe	0	MILE
701A-034	Solid Yellow, Class 2T, Type A Traffic Stripe	1	MILE
701C-001	Solid Temporary Traffic Stripe	1	MILE
703A-004	Traffic Control Markings, Class 2T, Type A	130	SF
704D-001	Temporary Traffic Control Markings	80	SF
705A-037	Pavement Markers, Class A-H, Type 2-D	0	EA
740B-000	Traffic Control Items	1	L.S.