

CONTRACT DOCUMENTS / BID DOCUMENTS / SPECIFICATIONS

SHEFFIELD 2024-25 CITY PAVING PROJECT

City of Sheffield
Colbert County, Alabama



Prepared By:
Civil Group, LLC
919 E Avalon Avenue, Suite B, Muscle Shoals, AL 35661
P:256-320-5082 F:256-320-5082

CITY OF SHEFFIELD
600 N MONTGOMERY AVENUE
SHEFFIELD, ALABAMA 35660



FOR: SHEFFIELD 2024-25 CITY PAVING PROJECT

INVITATION FOR BIDS:

Sealed bid proposals for furnishing materials, equipment or services as described herein will be received at the City of Sheffield, City Hall, Sheffield, Alabama until 10:00 AM local time on September 27, 2024.

It is understood that the owner may accept any or all items at the prices listed in this proposal within a period of thirty (30) days after the bid date for these items. Time is of the essence to this bid and if delivery is not made within the time specified, the City of Sheffield reserves the right to cancel the order. This bid may be withdrawn at any time prior to the scheduled time for the opening of bids, or any authorized postponement thereof.

DIRECTIONS FOR MAILING BIDS:

Envelopes containing bids must be sealed, marked and addressed as follows:

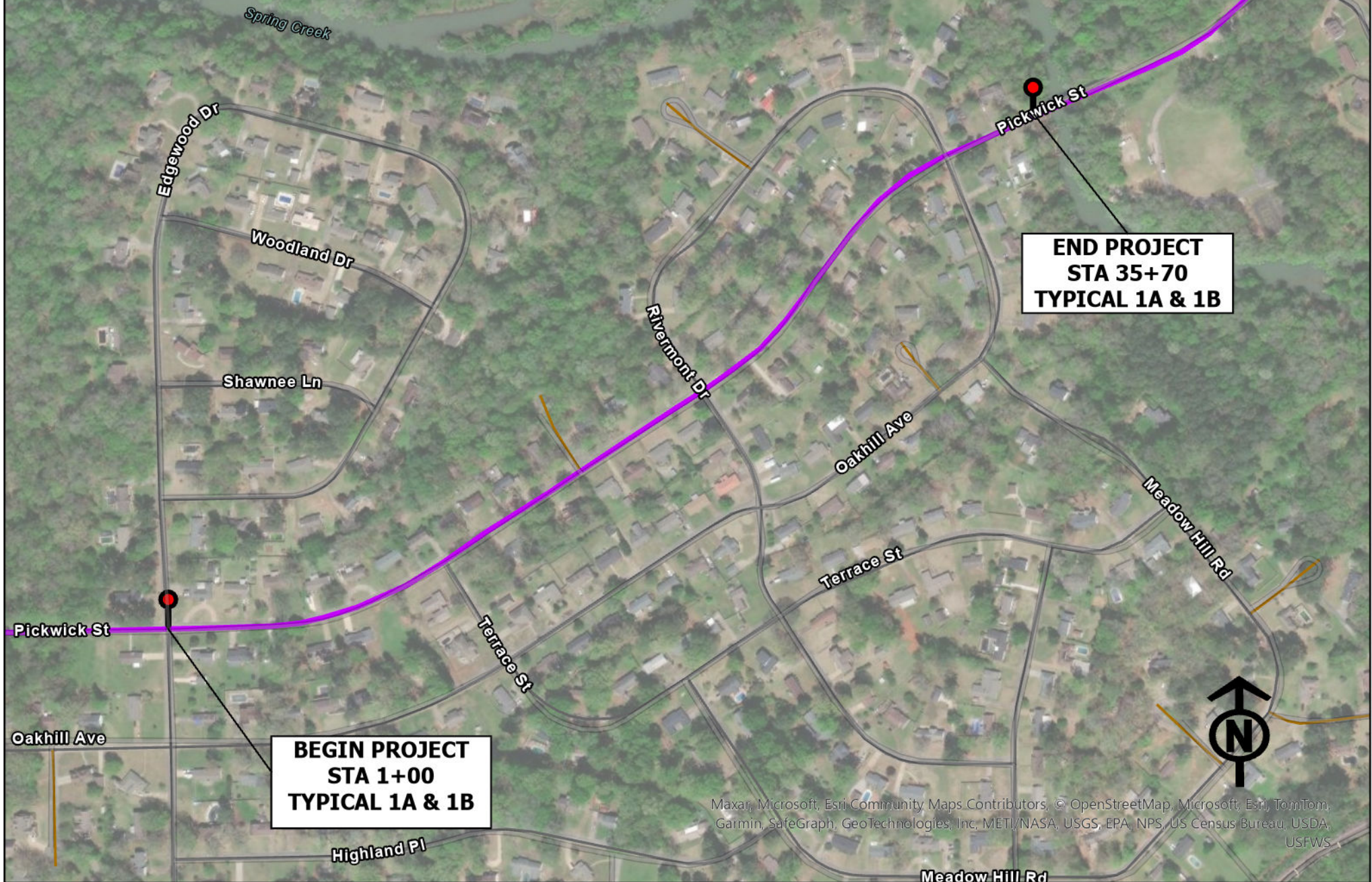
ADDRESSED TO: CITY OF SHEFFIELD
600 N MONTGOMERY AVE
SHEFFIELD, ALABAMA 35660

BID FOR: RESURFACE VARIOUS SHEFFIELD CITY STREETS

Bid will be opened in the City Hall Meeting Room, City Hall, Sheffield, Alabama at
10:00 AM local time on September 27, 2024.

The City of Sheffield does not discriminate on the basis of race, color, natural origin, sex, religion, age or disability in employment of the provision of services.

CITY OF SHEFFIELD - 2024-25 PAVING PROJECT - LOCATION MAP
PICKWICK STREET (Edgewood Dr - Bridge)
TYPICAL SECTIONS 1A & 1B



END PROJECT
STA 35+70
TYPICAL 1A & 1B

BEGIN PROJECT
STA 1+00
TYPICAL 1A & 1B

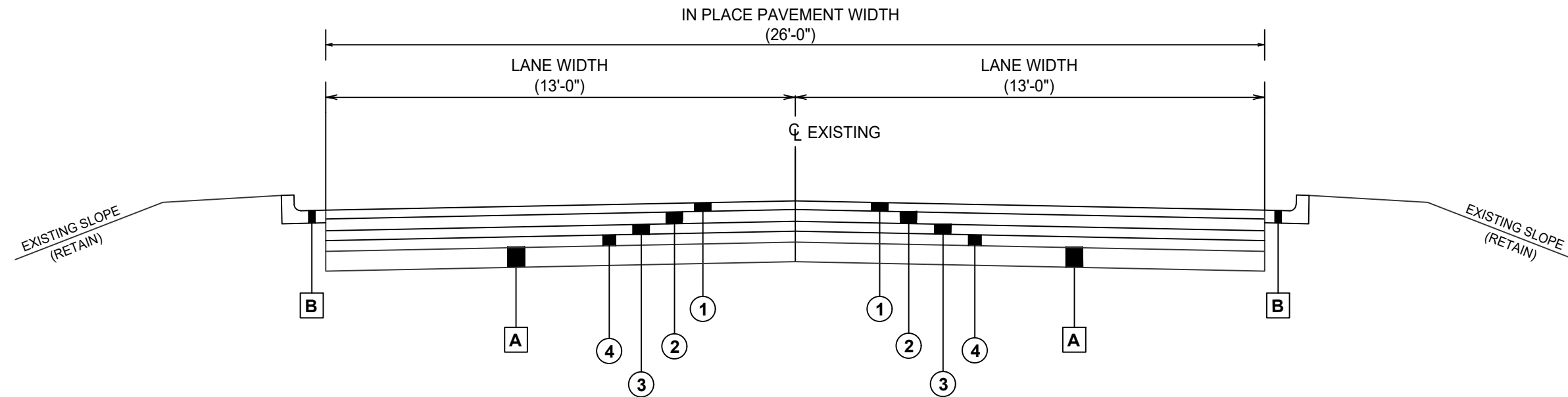
Maxar, Microsoft, Esri Community Maps Contributors, © OpenStreetMap, Microsoft, Esri, TomTom, Garmin, SafeGraph, GeoTechnologies, Inc, METI/NASA, USGS, EPA, NPS, US Census Bureau, USDA, USFWS

TYPICAL SECTIONS

PICKWICK ST (EDGEWOOD DR - BRIDGE)

TYPICAL 1A

STATION 1+00 TO STATION 35+70



LEGEND NO.	ITEM NO.	DESCRIPTION
A	"IN PLACE"	EXISTING SUBGRADE / BASE (RETAIN)
B	"IN PLACE"	EXISTING CURB AND GUTTER (RETAIN)
①	"REQUIRED"	424A-340 REQD ITEM NO. 424A-340 SUPERPAVE BITUMINOUS CONCRETE WEARING SURFACE LAYER, 1/2" MAXIMUM AGGREGATE SIZE MIX, ESAL RANGE A/B (APPROX. 150 LBS/SY)
②	"REQUIRED"	433A-000 SCRUB SEAL
③	"REQUIRED"	408A-052 PLANING EXISTING PAVEMENT (APPROX. 1.10" THRU 2.00" THICK)
④	"REQUIRED"	424A-346 REQD ITEM NO.424B-670 SUPERPAVE BITUMINOUS CONCRETE WEARING SURFACE LAYER, LEVELING, 1/2" MAXIMUM AGGREGATE SIZE MIX, ESAL RANGE A/B (AS DIRECTED BY ENGINEER)
⑤	"REQUIRED"	424B-670 REQD ITEM NO.424B-670 SUPERPAVE BITUMINOUS CONCRETE LOWER BINDER LAYER, PATCHING, 1" MAXIMUM AGGREGATE SIZE MIX, ESAL RANGE A/B TO BE SET ASIDE FOR PATCHING (AS DIRECTED BY ENGINEER)

PRELIMINARY

TYPICAL SECTION
PICKWICK ST (EDGEWOOD DR - BRIDGE)
TYPICAL 1A
SHEFFIELD, AL
COLBERT COUNTY

ELECTRONIC FILE DISCLAIMER:
The official drawings are those that are printed from the electronic file. Information transferred electronically to clients is not necessarily a true representation of the official document. Information on these plans in electronic form, provided verbally by others, written by others or interpreted by others.

REVISIONS:	

PLOTTED:	
DRAWN BY:	
DATE:	
SCALE:	
BY:	
DATE:	
PROJECT NO.:	
DATE:	
HORIZ. T.:	N/A
VERT. T.:	N/A

CITY OF SHEFFIELD - 2024-25 PAVING PROJECT - LOCATION MAP
PICKWICK STREET (Bridge - Wilson Dam Ave)
TYPICAL SECTIONS 2A & 2B

END PROJECT
STA 72+77
TYPICAL 2A & 2B

BEGIN PROJECT
STA 38+30
TYPICAL 2A & 2B



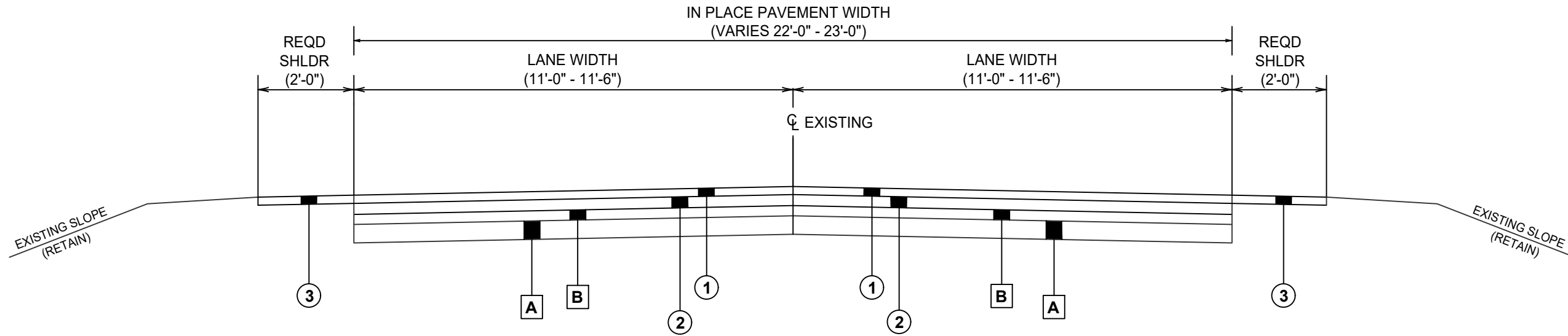
Esri, Garmin, Bing Maps, contributors, © OpenStreetMap contributors, © OpenStreetMap contributors, Esri, TomTom, Garmin, SafeGraph, GeoTechnologies, Inc, METI/NASA, USGS, EPA, FWS, US Census Bureau, USDA, USFWS, Maxar

TYPICAL SECTIONS

PICKWICK ST (BRIDGE - WILSON DAM AVE)

TYPICAL 2A

STATION 38+30 TO STATION 72+77



LEGEND NO.	ITEM NO.	DESCRIPTION
A	"IN PLACE"	EXISTING SUBGRADE / BASE (RETAIN)
B	"IN PLACE"	EXISTING ASPHALT PAVEMENT (RETAIN)
①	"REQUIRED"	424A-340 REQD ITEM NO. 424A-340 SUPERPAVE BITUMINOUS CONCRETE WEARING SURFACE LAYER, 1/2" MAXIMUM AGGREGATE SIZE MIX, ESAL RANGE A/B (APPROX. 150 LBS/SY)
②	"REQUIRED"	433A-000 SCRUB SEAL
③	"REQUIRED"	430B-042 AGGREGATE SURFACING (1" DOWN, CRUSHER RUN)

PRELIMINARY

TYPICAL SECTION
PICKWICK ST (BRIDGE - WILSON DAM AVE)
TYPICAL 2A
SHEFFIELD, AL
COLBERT COUNTY

ELECTRONIC FILE DISCLAIMER:
The official drawings are those that are signed and sealed by the Professional Engineer/Surveyor. Information transferred electronically to clients is not necessarily a true representation of the official document. Information on these plans in electronic form, provided verbally by others, written by others or interpreted by others.

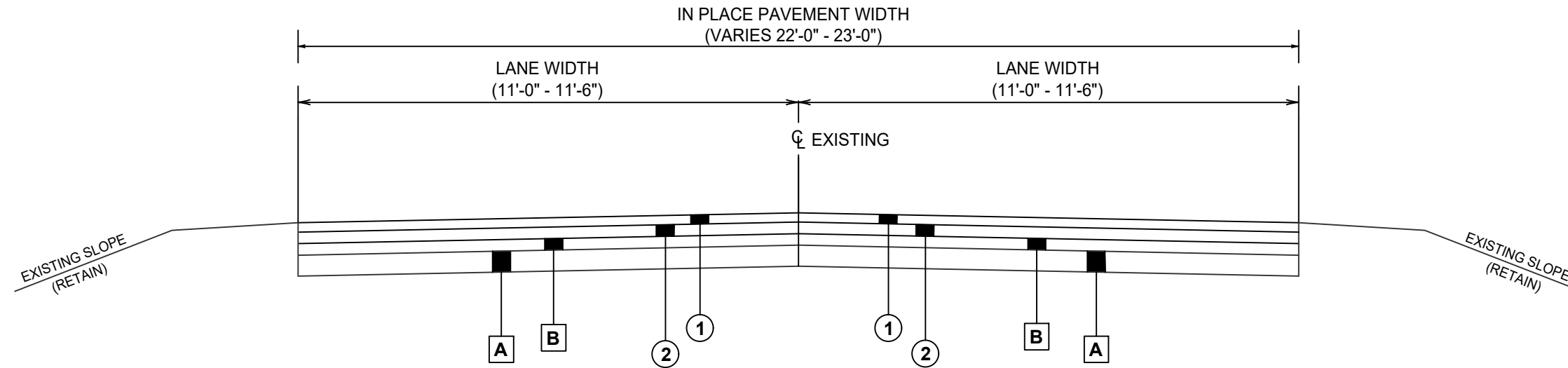
PLOTTED:		REVISIONS:	
DRAWN BY:	JCS	NO.	DATE
CHECKED BY:	BNW		
DWG. FILE:	000000.dwg		
DATE:	08/20/2024		
PROJECT NO.:	2024-105		
DATE:	08/20/2024		
HORIZ. TYP:	N/A		
VERT. TYP:	N/A		

TYPICAL SECTIONS

PICKWICK ST (BRIDGE - WILSON DAM AVE)

TYPICAL 2B

STATION 38+30 TO STATION 72+77



LEGEND NO.	ITEM NO.	DESCRIPTION
A	"IN PLACE"	EXISTING SUBGRADE / BASE (RETAIN)
B	"IN PLACE"	EXISTING ASPHALT PAVEMENT (RETAIN)
①	"REQUIRED"	403B-000 MICRO-SURFACING SEAL COAT, TYPE II
②	"REQUIRED"	433A-000 SCRUB SEAL
③	"REQUIRED"	424B-670 REQD ITEM NO.424B-640 SUPERPAVE BITUMINOUS CONCRETE LOWER BINDER LAYER, PATCHING, 1" MAXIMUM AGGREGATE SIZE MIX, ESAL RANGE A/B TO BE SET ASIDE FOR PATCHING (AS DIRECTED BY ENGINEER)

PRELIMINARY

TYPICAL SECTION
PICKWICK ST (BRIDGE - WILSON DAM AVE)
TYPICAL 2B
SHEFFIELD, AL
COLBERT COUNTY

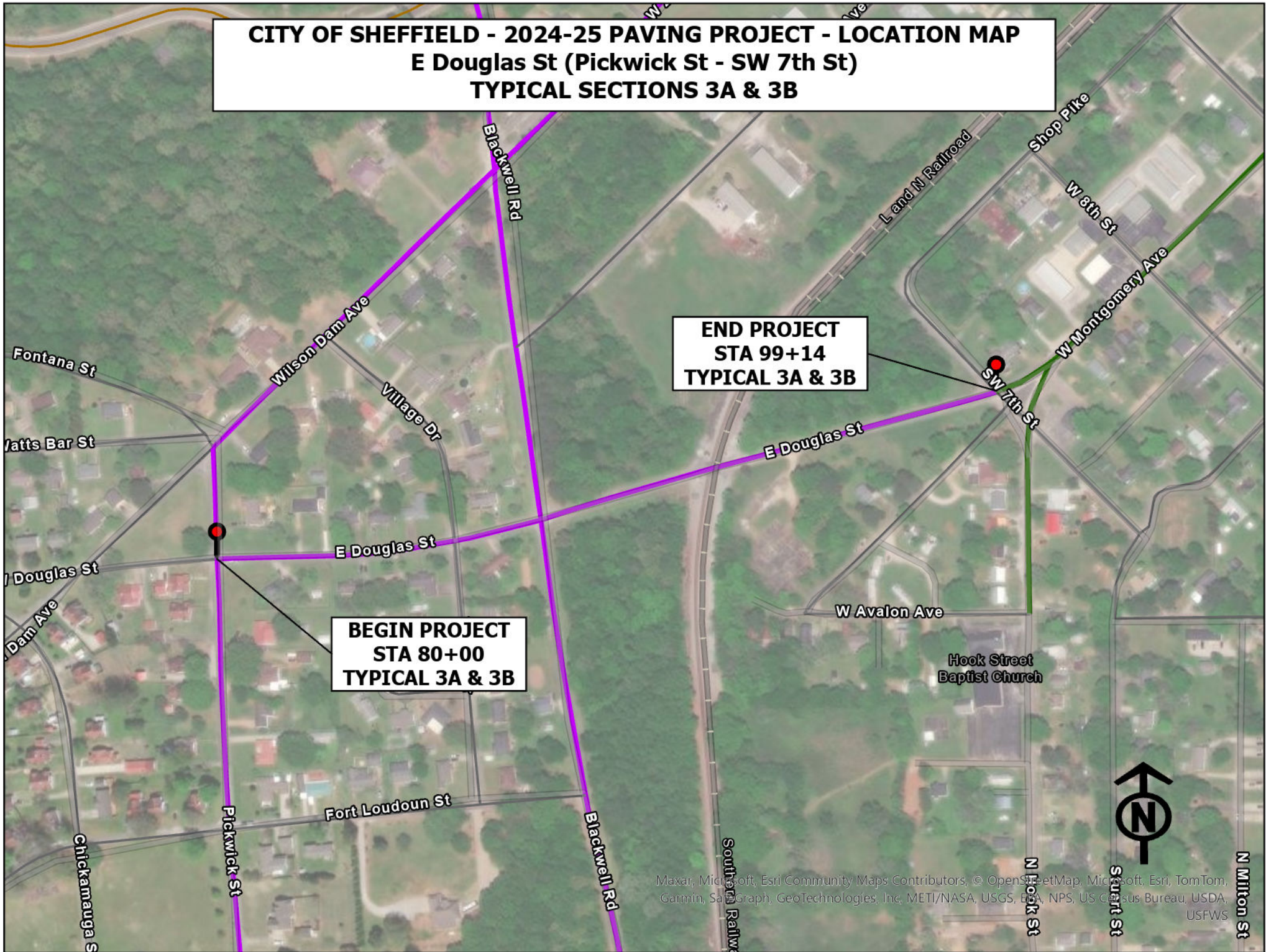
ELECTRONIC FILE DISCLAIMER:
The official drawings are those that are signed and sealed by the Professional Engineer/Surveyor. Information transferred electronically to clients is not necessarily a true representation of the official document. Information on these plans in electronic form, provided verbally by others, written by others or interpreted by others.

PLOTTED:		DRAWN BY:		CHECKED BY:		DATE:	
FILE NO.	DATE	NAME	DATE	NAME	DATE	NAME	DATE
PROJECT NO.	PROJECT NAME	PROJECT NAME	PROJECT NAME	PROJECT NAME	PROJECT NAME	PROJECT NAME	PROJECT NAME
SCALE	SCALE	SCALE	SCALE	SCALE	SCALE	SCALE	SCALE
HORIZ 1" =	HORIZ 1" =	HORIZ 1" =	HORIZ 1" =	HORIZ 1" =	HORIZ 1" =	HORIZ 1" =	HORIZ 1" =
VERT 1" =	VERT 1" =	VERT 1" =	VERT 1" =	VERT 1" =	VERT 1" =	VERT 1" =	VERT 1" =

CITY OF SHEFFIELD - 2024-25 PAVING PROJECT - LOCATION MAP
E Douglas St (Pickwick St - SW 7th St)
TYPICAL SECTIONS 3A & 3B

END PROJECT
STA 99+14
TYPICAL 3A & 3B

BEGIN PROJECT
STA 80+00
TYPICAL 3A & 3B



Maxar, Microsoft, Esri Community Maps Contributors, © OpenStreetMap, Microsoft, Esri, TomTom, Garmin, SatGraph, GeoTechnologies, Inc, METI/NASA, USGS, EPA, NPS, US Census Bureau, USDA, USFWS

CITY OF SHEFFIELD - 2024-25 PAVING PROJECT - LOCATION MAP
W MONTGOMERY AVE (SW 7th St - S Montgomery Ave)
TYPICAL SECTION 4A & 4B

END PROJECT
STA 149+86
TYPICAL 4A & 4B

BEGIN PROJECT
STA 99+14
TYPICAL 4A & 4B



Maxar, Microsoft, Esri Community Maps Contributors, © OpenStreetMap, Microsoft, Esri, TomTom, Garmin, SafeGraph, GeoTechnologies, Inc, METI/NASA, USGS, EPA, NPS, US Census Bureau, USDA, USFWS

CITY OF SHEFFIELD - 2024-25 PAVING PROJECT - LOCATION MAP
HATCH BLVD (Dover Ave - E 31st St)
TYPICAL SECTION 5A & 5B

END PROJECT
STA 228+58
TYPICAL 5A & 5B

BEGIN PROJECT
STA 200+00
TYPICAL 5A & 5B

Ekklesia
Missionary
Baptist

York Terrace
Baptist Church

First Church of
the Nazarene

W. A.
Threadgill
Primary School

Friendship
Seewill Baptist
Church

Avenue Church
of Christ



CITY OF SHEFFIELD - 2024-25 PAVING PROJECT - LOCATION MAP
HATCH BLVD (E 31st St - Oakwood Blvd)
TYPICAL SECTION 6A & 6B

END PROJECT
STA 256+28
TYPICAL 6A & 6B

BEGIN PROJECT
STA 228+58
TYPICAL 6A & 6B

Ekklesia
Missionary
Baptist

E. L. Newman
Lustron House

CITY OF SHEFFIELD - 2024-25 PAVING PROJECT - LOCATION MAP
HATCH BLVD (Oakwood Blvd - Crestline Ave)
TYPICAL SECTION 7A & 7B

BEGIN PROJECT
STA 256+28
TYPICAL 7A & 7B

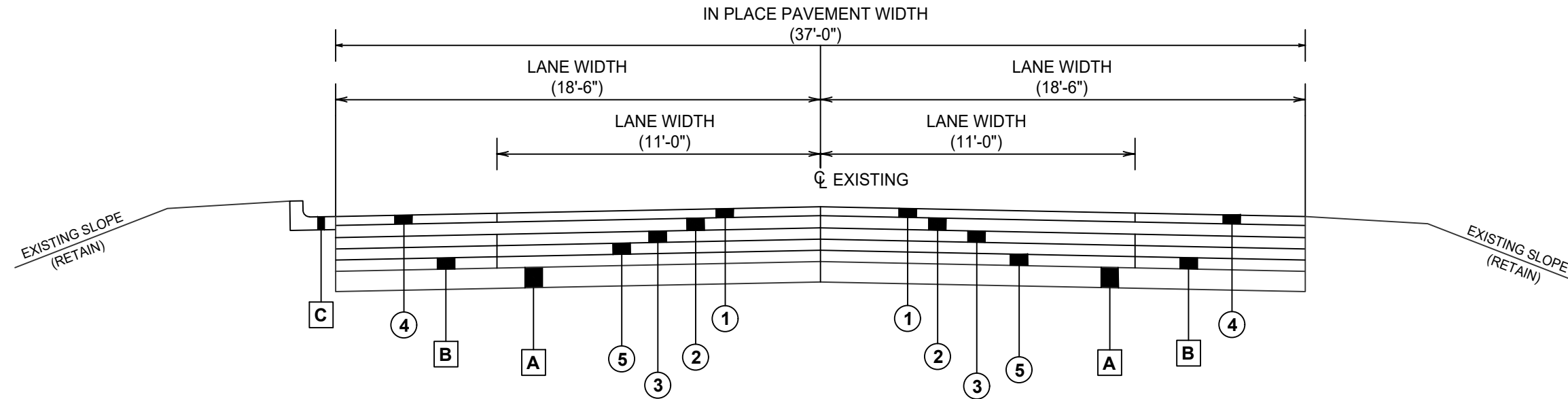
END PROJECT
STA 267+58
TYPICAL 7A & 7B

TYPICAL SECTIONS

HATCH BOULEVARD (OAKWOOD BLVD - CRESTLINE AVE)

TYPICALS 7A & 7B

STATION 256+28 TO STATION 267+58



LEGEND NO.	ITEM NO.	DESCRIPTION
A	"IN PLACE"	EXISTING SUBGRADE / BASE (RETAIN)
B	"IN PLACE"	EXISTING ASPHALT PAVEMENT (RETAIN) (OUTSIDE AREA ONLY)
C	"IN PLACE"	EXISTING CURB AND GUTTER (RETAIN)
①	"REQUIRED"	424A-340 REQD ITEM NO. 424A-340 SUPERPAVE BITUMINOUS CONCRETE WEARING SURFACE LAYER, 1/2" MAXIMUM AGGREGATE SIZE MIX, ESAL RANGE A/B (APPROX. 150 LBS/SY) (MIDDLE 22' WIDE)
②	"REQUIRED"	433A-000 SCRUB SEAL (FULL WIDTH)
③	"REQUIRED"	408A-052 PLANING EXISTING PAVEMENT (APPROX. 1.10" THRU 2.00" THICK) (MIDDLE 22' WIDE)
④	"REQUIRED"	401A-001 BITUMINOUS TREATMENT B (SAND) (OUTSIDE AREA ONLY)
⑤	"REQUIRED"	424A-346 REQD ITEM NO.424B-670 SUPERPAVE BITUMINOUS CONCRETE WEARING SURFACE LAYER, LEVELING, 1/2" MAXIMUM AGGREGATE SIZE MIX, ESAL RANGE A/B (AS DIRECTED BY ENGINEER)
⑥	"REQUIRED"	424B-670 REQD ITEM NO.424B-640 SUPERPAVE BITUMINOUS CONCRETE LOWER BINDER LAYER, PATCHING, 1" MAXIMUM AGGREGATE SIZE MIX, ESAL RANGE A/B TO BE SET ASIDE FOR PATCHING (AS DIRECTED BY ENGINEER)

PRELIMINARY

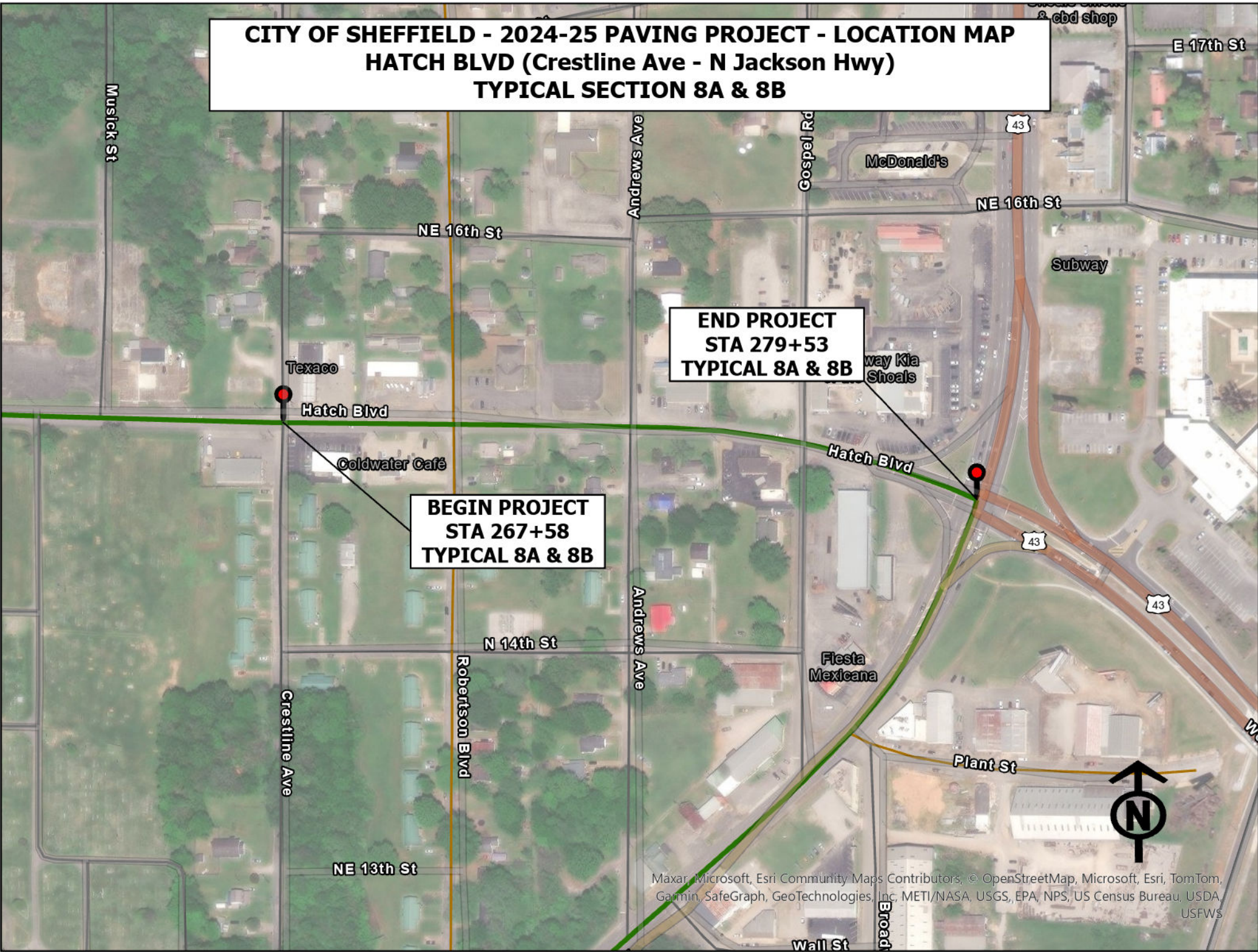
TYPICAL SECTION
HATCH BOULEVARD (OAKWOOD BLVD
- CRESTLINE AVE) - TYPICALS 7A & 7B
SHEFFIELD, AL
COLBERT COUNTY

ELECTRONIC FILE DISCLAIMER:
The official drawings are those that have been signed and sealed by the Professional Engineer/Surveyor. Information transferred electronically to clients is not necessarily a true representation of the official document. Information on these plans in electronic form, provided verbally by others, written by others or interpreted by others.

NO.	DATE	DESCRIPTION

PLOTTED BY:	
DRAWN BY:	
CHECKED BY:	
DATE:	
SCALE:	
PROJECT NO.:	
DATE:	
HORIZ. 1" =	N/A
VERT. 1" =	N/A

CITY OF SHEFFIELD - 2024-25 PAVING PROJECT - LOCATION MAP
HATCH BLVD (Crestline Ave - N Jackson Hwy)
TYPICAL SECTION 8A & 8B



END PROJECT
STA 279+53
TYPICAL 8A & 8B

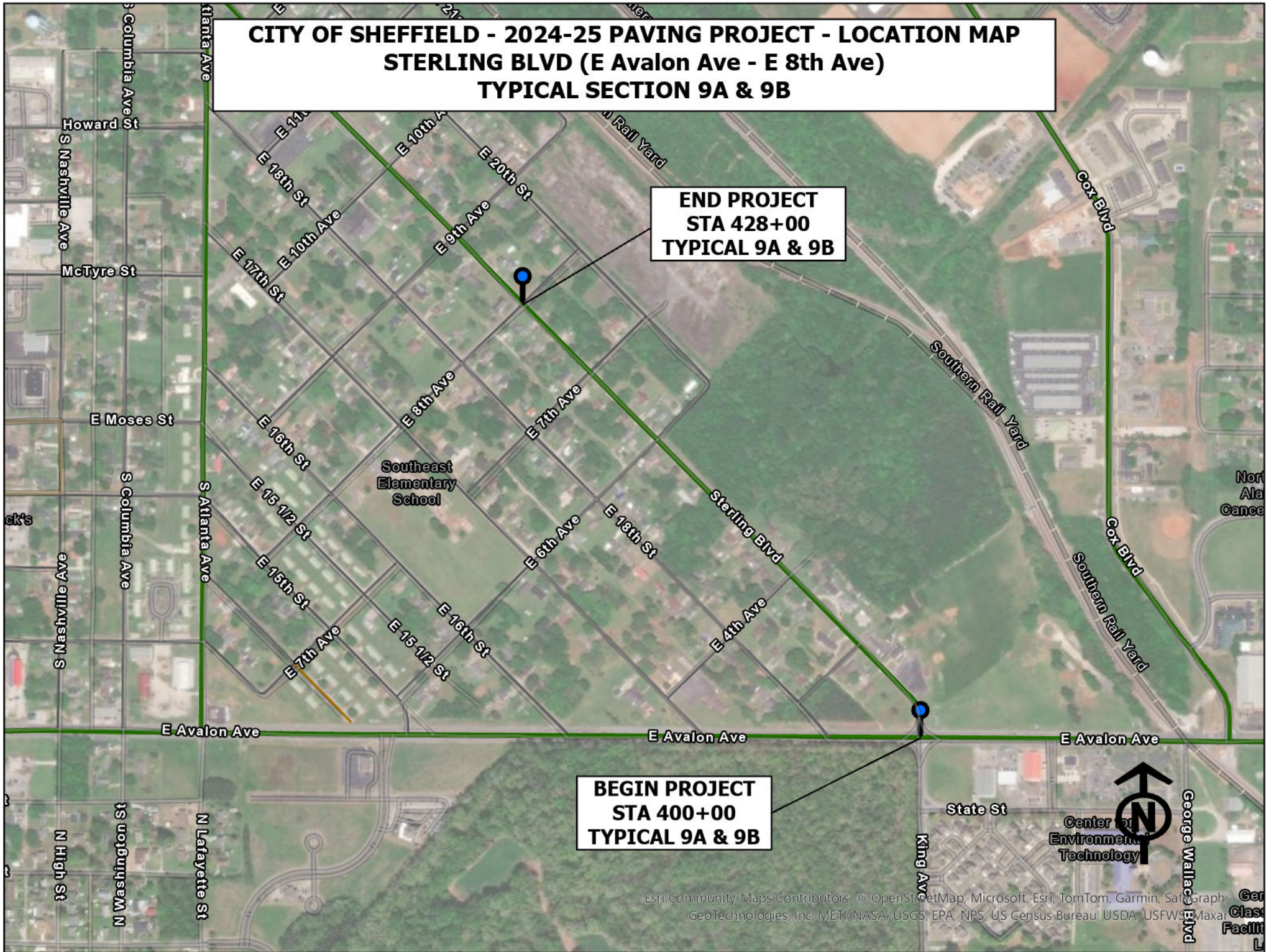
BEGIN PROJECT
STA 267+58
TYPICAL 8A & 8B

Maxar, Microsoft, Esri Community Maps Contributors, © OpenStreetMap, Microsoft, Esri, TomTom, Garmin, SafeGraph, GeoTechnologies, Inc. METI/NASA, USGS, EPA, NPS, US Census Bureau, USDA, USFWS

CITY OF SHEFFIELD - 2024-25 PAVING PROJECT - LOCATION MAP
STERLING BLVD (E Avalon Ave - E 8th Ave)
TYPICAL SECTION 9A & 9B

END PROJECT
STA 428+00
TYPICAL 9A & 9B

BEGIN PROJECT
STA 400+00
TYPICAL 9A & 9B



Esri Community Maps Contributors, © OpenStreetMap, Microsoft, Esri, TomTom, Garmin, SatGraph, GeoTechnologies, Inc, METI/NASA, USGS, EPA, NPS, US Census Bureau, USDA, USFWS, Maxar, Glass Facility

CITY OF SHEFFIELD - 2024-25 PAVING PROJECT - ALTERNATE "A" - BID SHEET

Item No.	Description	Quantity	Units	Unit Price	Total Cost
401A-001	Bituminous Treatment B (Sand)	13,093	SQ. YD.		
408A-052	Planing Existing Pavement (Approximately 1.10" Thru 2.00" Thick)	48,720	SQ. YD.		
424A-340	Superpave Bituminous Concrete Wearing Surface Layer, 1/2" Maximum Aggregate Size Mix, ESAL Range A/B)	4,815	TON		
424A-346	Superpave Bituminous Concrete Wearing Surface Layer, Leveling, 1/2" Maximum Aggregate Size Mix, ESAL Range A/B)	800	TON		
424B-640	Superpave Bituminous Concrete Lower Binder Layer, Patching, 1" Maximum Aggregate Size Mix, ESAL Range A/B)	906	TON		
430B-042	Aggregate Surfacing (1" Down, Crusher Run)	545	TON		
433A-000	Scrub Seal	77,271	SQ. YD.		
600A-000	Mobilization	1	L.S.		
622A-004	Manhole Covers Reset (Riser Ring Method)	35	EA		
641S-500	Valve Box Reset	11	EA		
701A-030	Solid White, Class 2T, Type A Traffic Stripe	9	MILE		
701A-034	Solid Yellow, Class 2T, Type A Traffic Stripe	9	MILE		
701C-001	Solid Temporary Traffic Stripe	17	MILE		
703A-004	Traffic Control Markings, Class 2T, Type A	2,750	SF		
740B-000	Traffic Control Items	1	L.S.		
TOTAL:					

CITY OF SHEFFIELD - 2024-25 PAVING PROJECT - ALTERNATE "B" - BID SHEET

Item No.	Description	Quantity	Units	Unit Price	Total Cost
403B-000	Micro-Surfacing Seal Coat, Type II	233	Ton		
401A-001	Bituminous Treatment B (Sand)	13,093	SQ. YD.		
408A-052	Planing Existing Pavement (Approximately 1.10" Thru 2.00" Thick)	38,696	SQ. YD.		
424A-340	Superpave Bituminous Concrete Wearing Surface Layer, 1/2" Maximum Aggregate Size Mix, ESAL Range A/B)	3,417	TON		
424A-346	Superpave Bituminous Concrete Wearing Surface Layer, Leveling, 1/2" Maximum Aggregate Size Mix, ESAL Range A/B)	800	TON		
424B-640	Superpave Bituminous Concrete Lower Binder Layer, Patching, 1" Maximum Aggregate Size Mix, ESAL Range A/B)	906	TON		
430B-042	Aggregate Surfacing (1" Down, Crusher Run)	315	TON		
433A-000	Scrub Seal	77,271	SQ. YD.		
600A-000	Mobilization	1	L.S.		
622A-004	Manhole Covers Reset (Riser Ring Method)	35	EA		
641S-500	Valve Box Reset	11	EA		
701A-030	Solid White, Class 2T, Type A Traffic Stripe	9	MILE		
701A-034	Solid Yellow, Class 2T, Type A Traffic Stripe	9	MILE		
701C-001	Solid Temporary Traffic Stripe	17	MILE		
703A-004	Traffic Control Markings, Class 2T, Type A	2,750	SF		
740B-000	Traffic Control Items	1	L.S.		

TOTAL:

--