



CONTRACT DOCUMENTS / BID DOCUMENTS / SPECIFICATIONS

**CITY OF RUSSELLVILLE 2024 RAA GRANT  
MICRO-SURFACING PROJECT**

City of Russellville  
Franklin County, Alabama

Prepared By:  
Civil Group, LLC  
919 E Avalon Avenue, Suite B, Muscle Shoals, AL 35661  
P:256-320-5082 F:256-320-5082



CITY OF RUSSELLVILLE  
304 N JACKSON AVENUE  
RUSSELLVILLE, ALABAMA 35653

FOR: RUSSELLVILLE 2024 RAA GRANT MICRO-SURFACING PROJECT

INVITATION FOR BIDS:

Sealed bid proposals for furnishing materials, equipment or services as described herein will be received at the City of Russellville, City Hall, Russellville, Alabama until 10:00 AM local time on November 6, 2024.

It is understood that the owner may accept any or all items at the prices listed in this proposal within a period of thirty (30) days after the bid date for these items. Time is of the essence to this bid and if delivery is not made within the time specified, the City of Russellville reserves the right to cancel the order. This bid may be withdrawn at any time prior to the scheduled time for the opening of bids, or any authorized postponement thereof.

DIRECTIONS FOR MAILING BIDS:

Envelopes containing bids must be sealed, marked and addressed as follows:

ADDRESSED TO:

CITY OF RUSSELLVILLE  
304 N JACKSON AVENUE  
RUSSELLVILLE, ALABAMA 35653

BID FOR: RESURFACE VARIOUS RUSSELLVILLE CITY STREETS

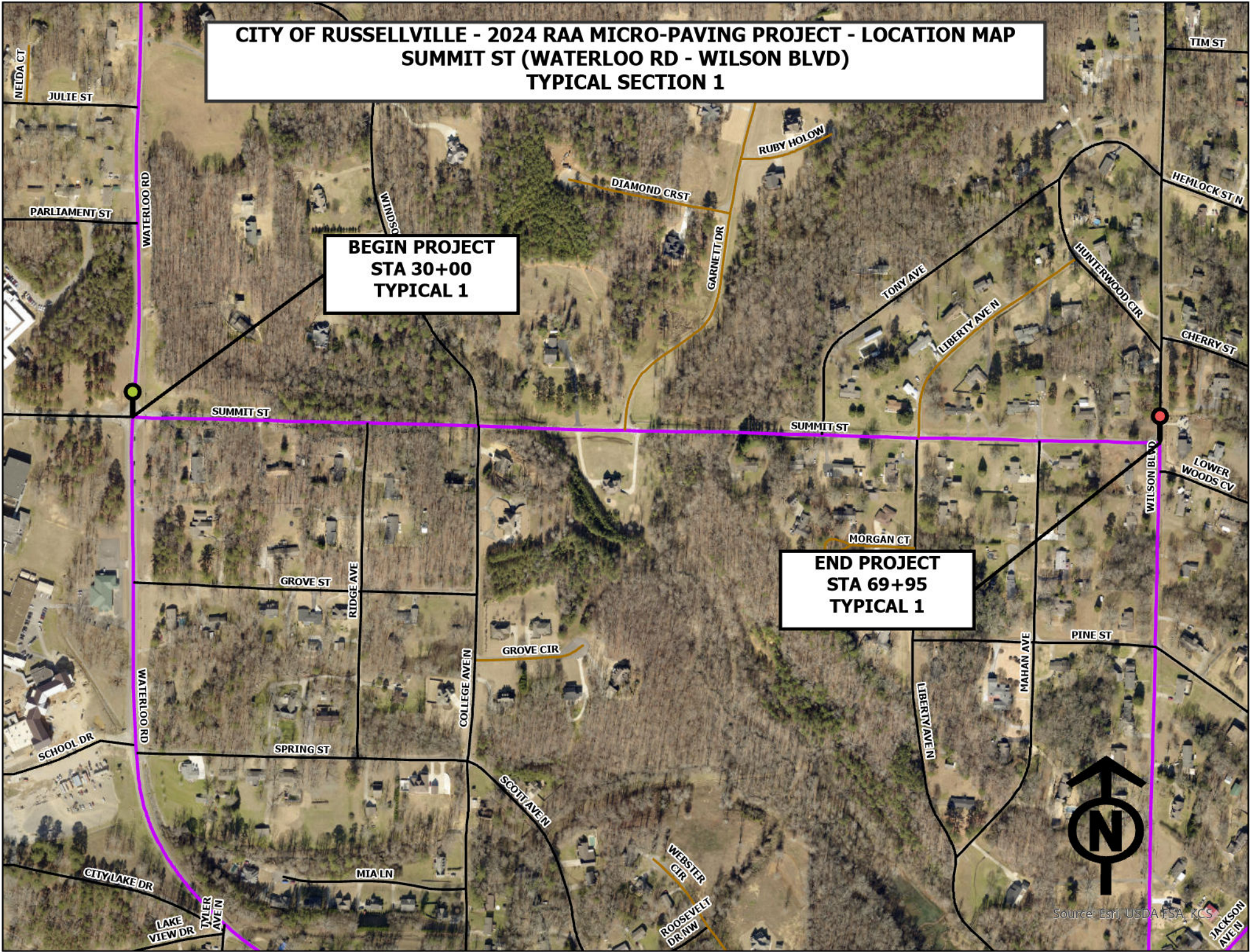
Bid will be opened in the City Hall Meeting Room, City Hall, Russellville, Alabama at 10:00 AM local time on November 6, 2024.

The City of Russellville does not discriminate on the basis of race, color, natural origin, sex, religion, age or disability in employment of the provision of services.

**CITY OF RUSSELLVILLE - 2024 RAA MICRO-PAVING PROJECT - LOCATION MAP  
SUMMIT ST (WATERLOO RD - WILSON BLVD)  
TYPICAL SECTION 1**

**BEGIN PROJECT  
STA 30+00  
TYPICAL 1**

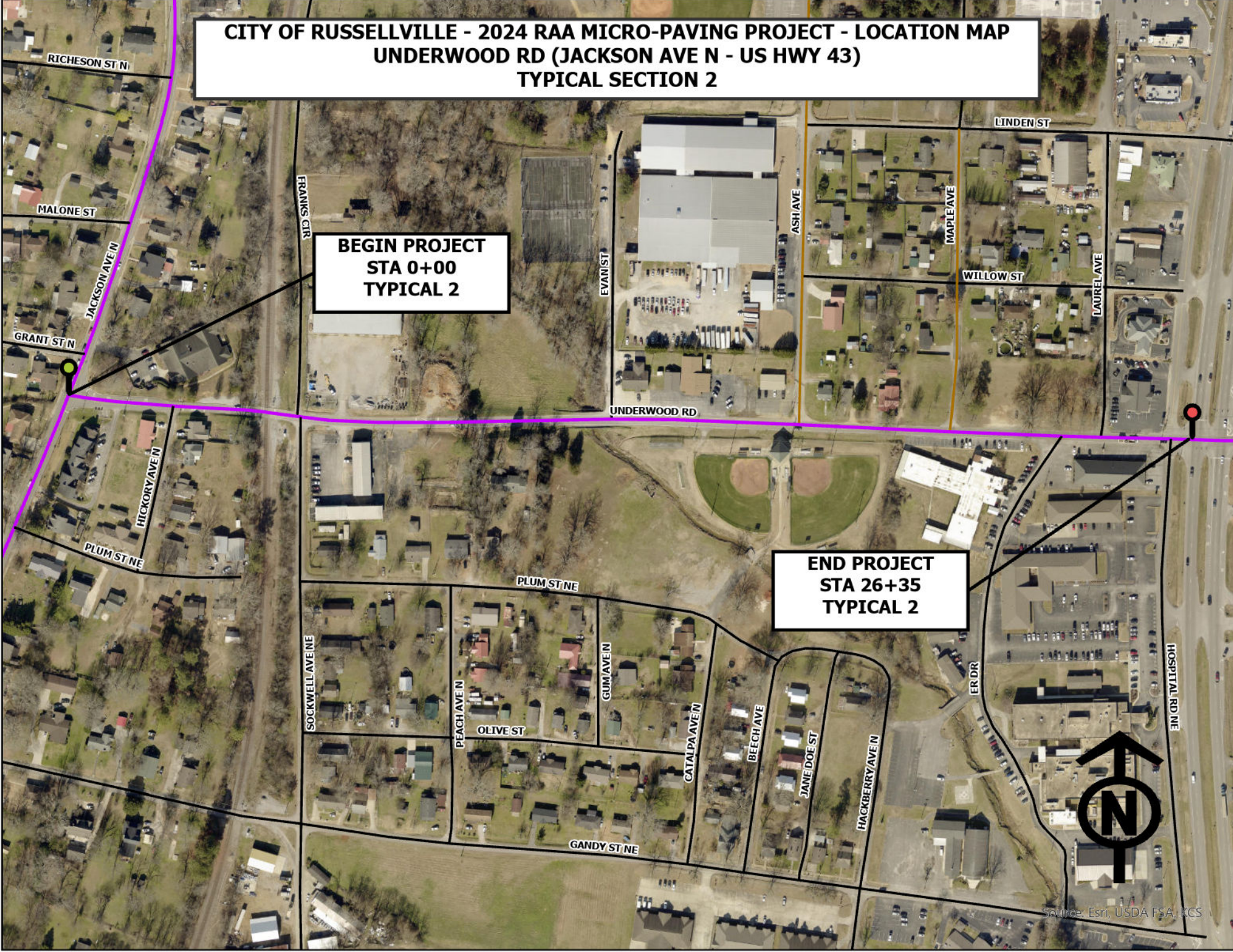
**END PROJECT  
STA 69+95  
TYPICAL 1**



**CITY OF RUSSELLVILLE - 2024 RAA MICRO-PAVING PROJECT - LOCATION MAP**  
**UNDERWOOD RD (JACKSON AVE N - US HWY 43)**  
**TYPICAL SECTION 2**

**BEGIN PROJECT**  
**STA 0+00**  
**TYPICAL 2**

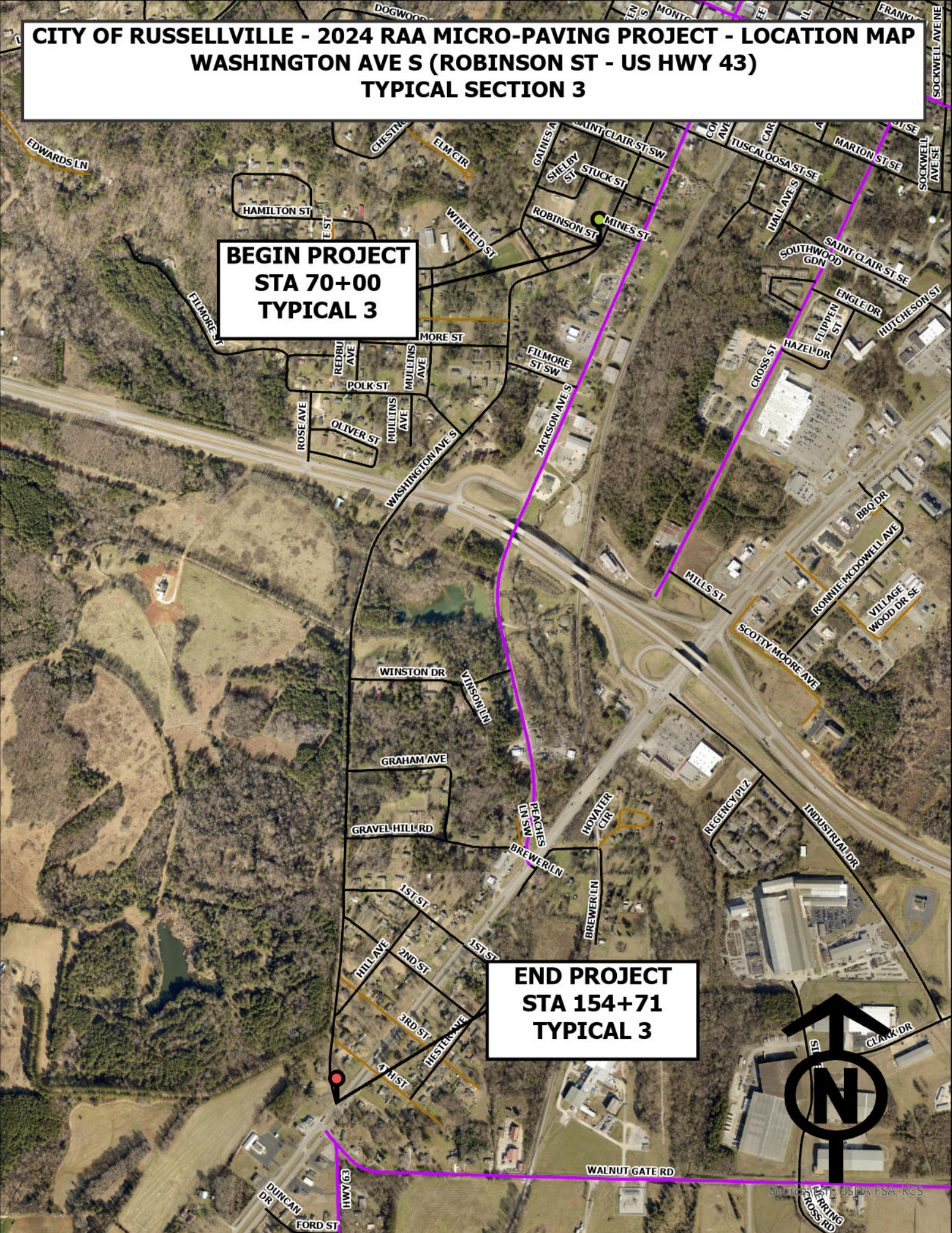
**END PROJECT**  
**STA 26+35**  
**TYPICAL 2**



**CITY OF RUSSELLVILLE - 2024 RAA MICRO-PAVING PROJECT - LOCATION MAP**  
**WASHINGTON AVE S (ROBINSON ST - US HWY 43)**  
**TYPICAL SECTION 3**

**BEGIN PROJECT**  
**STA 70+00**  
**TYPICAL 3**

**END PROJECT**  
**STA 154+71**  
**TYPICAL 3**



**CITY OF RUSSELLVILLE - 2024 RAA MICRO-PAVING PROJECT - LOCATION MAP  
HESTER LINE RD (US HWY 43 - HWY 63)  
TYPICAL SECTION 4**

**BEGIN PROJECT  
STA 155+00  
TYPICAL 4**

**END PROJECT  
STA 179+75  
TYPICAL 4**



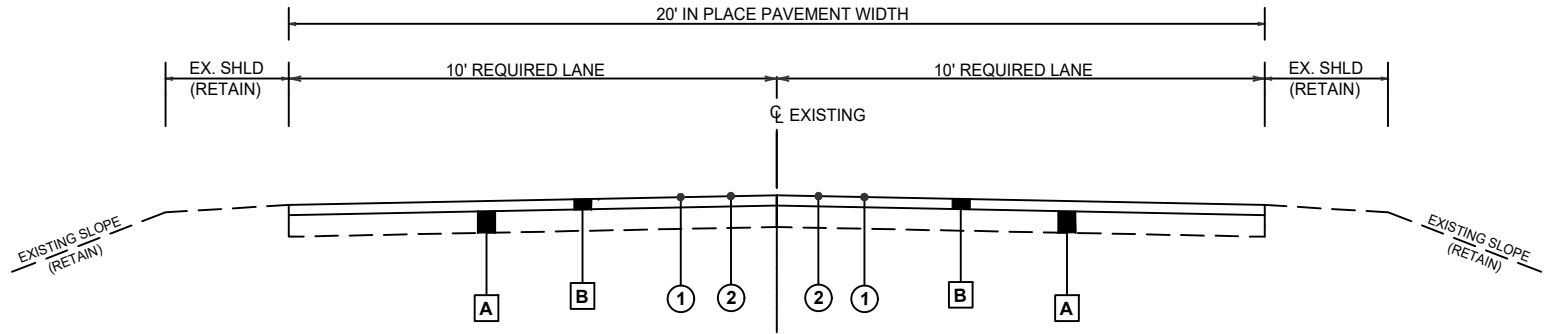


**CivilGroup**  
engineering • surveying

919 EAST AVALON AVE., SUITE B  
MUSCLE SHOALS, ALABAMA 35661  
P: 256.320.8082 • F: 256.320.5082

**TYPICAL SECTION 1**  
**SUMMIT STREET**  
**FY 2024 RAA GRANT PROGRAM**

**TYPICAL SECTION 1**  
**SUMMIT STREET (FROM WATERLOO ROAD TO WILSON BLVD)**  
**STA 30+00 TO STA 69+95**



LEGEND NO.	ITEM NO.	DESCRIPTION
A		EXISTING SUBGRADE / BASE (RETAIN)
B		EXISTING ASPHALT (RETAIN)
①	433A-000	SCRUB SEAL
②	401B-106	MICRO-SURFACING SEAL COAT, TYPE II (APPROX. 25 LBS/SY)

SCALE: 1" = NA  
JOB NO.: NA  
SURVEYED BY: NA  
DRAWN BY: CAS  
CHECKED BY: JKB  
CRD.: NA  
DATE: NA

NOT TO SCALE



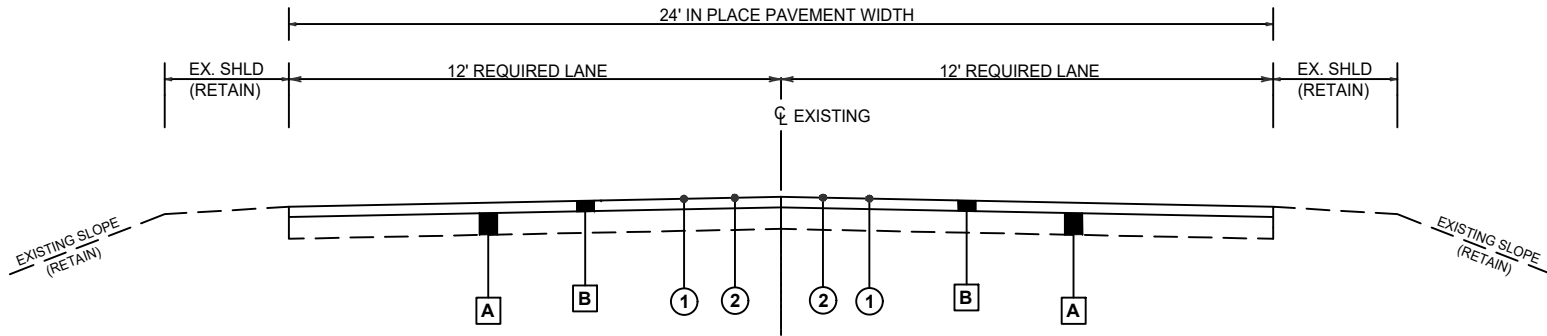
**CivilGroup**  
engineering • surveying

919 EAST AVAALON AVE., SUITE B  
MUSCLE SHOALS, ALABAMA 35661  
P: 256.320.8082 • F: 256.320.5082

**TYPICAL SECTION 2**  
**UNDERWOOD ROAD**  
**FY 2024 RAA GRANT PROGRAM**

SCALE: 1" = NA | DATE: NA  
JOB NO.: NA  
SURVEYED BY: NA  
DRAWN BY: CAS  
CHECKED BY: JKB  
CRD.: NA

**TYPICAL SECTION 2**  
**UNDERWOOD ROAD (FROM JACKSON AVE N TO HWY 43)**  
**STA 0+00 TO STA 26+35**



LEGEND NO.	ITEM NO.	DESCRIPTION
A		"IN PLACE" EXISTING SUBGRADE / BASE (RETAIN)
B		"IN PLACE" EXISTING ASPHALT (RETAIN)
①	433A-000	"REQUIRED" SCRUB SEAL
②	401B-106	"REQUIRED" MICRO-SURFACING SEAL COAT, TYPE II (APPROX. 25 LBS/SY)

NOT TO SCALE





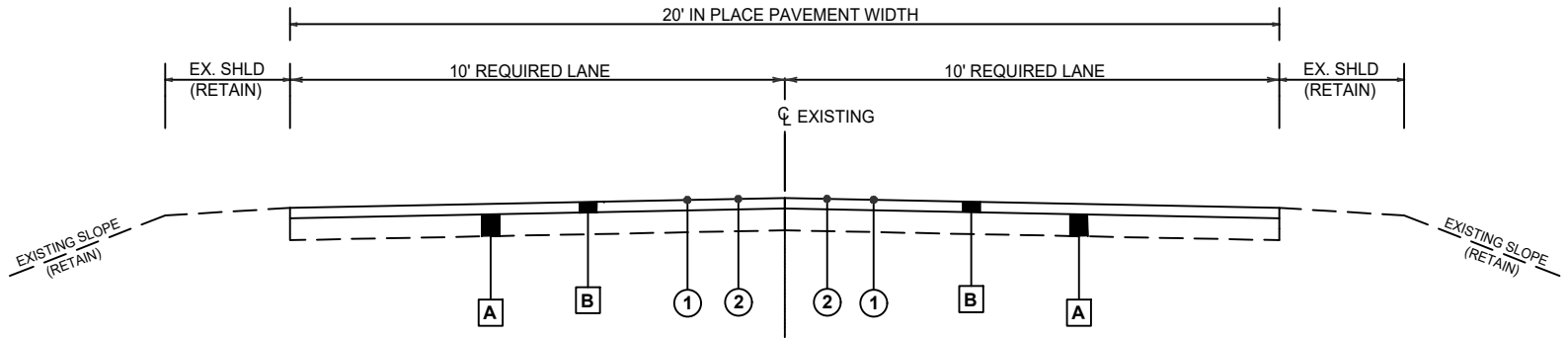
**CivilGroup**  
engineering • surveying

919 EAST AVAALON AVE., SUITE B  
MUSCLE SHOALS, ALABAMA 35661  
P 256.320.8082 • F 256.320.5082

**TYPICAL SECTION 3**  
**WASHINGTON AVENUE SOUTH**  
**FY 2024 RAA GRANT PROGRAM**

SCALE: 1" = NA | DATE: NA  
JOB NO.: NA  
SURVEYED BY: NA  
DRAWN BY: CAS  
CHECKED BY: JKB  
CRD.: NA

**TYPICAL SECTION 3**  
**WASHINGTON AVE S (FROM ROBINSON STREET TO HWY 43)**  
**STA 70+00 TO STA 154+71**



LEGEND NO.	ITEM NO.	DESCRIPTION
A		"IN PLACE" EXISTING SUBGRADE / BASE (RETAIN)
B		"IN PLACE" EXISTING ASPHALT (RETAIN)
①	433A-000	"REQUIRED" SCRUB SEAL
②	401B-106	"REQUIRED" MICRO-SURFACING SEAL COAT, TYPE II (APPROX. 25 LBS/SY)

NOT TO SCALE

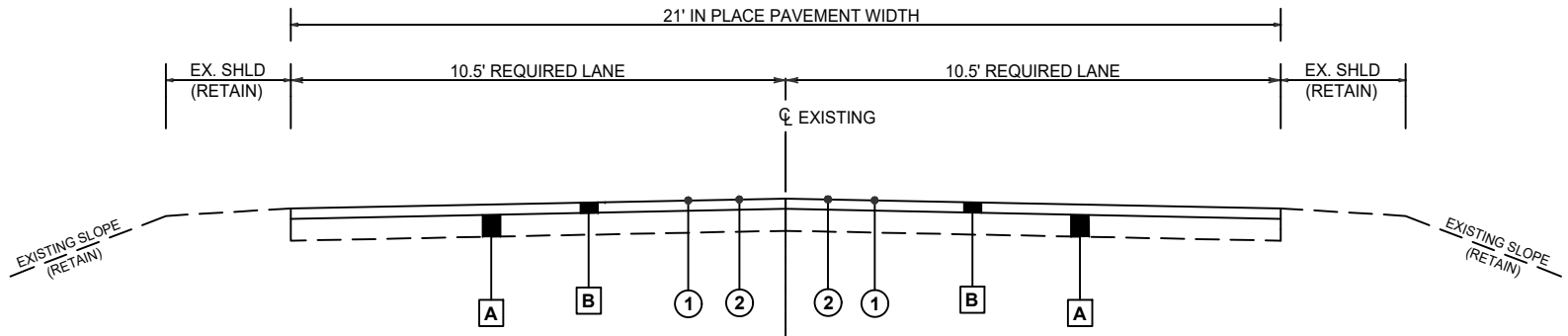


**CivilGroup**  
engineering • surveying

919 EAST AVAALON AVE., SUITE B  
MUSCLE SHOALS, ALABAMA 35661  
P: 256.320.8082 • F: 256.320.5082

**TYPICAL SECTION 4**  
**HESTER LINE ROAD**  
**FY 2024 RAA GRANT PROGRAM**

**TYPICAL SECTION 4**  
**HESTER LINE ROAD (FROM HWY 43 TO HWY 63)**  
**STA 155+00 TO STA 179+75**



LEGEND NO.	ITEM NO.	DESCRIPTION
A	"IN PLACE"	EXISTING SUBGRADE / BASE (RETAIN)
B	"IN PLACE"	EXISTING ASPHALT (RETAIN)
①	"REQUIRED"	433A-000 SCRUB SEAL
②	"REQUIRED"	401B-106 MICRO-SURFACING SEAL COAT, TYPE II (APPROX. 25 LBS/SY)

SCALE: 1" = NA | DATE: NA  
 JOB NO.: NA  
 SURVEYED BY: NA  
 DRAWN BY: CAS  
 CHECKED BY: JKB  
 CRD.: NA

NOT TO SCALE

**CITY OF RUSSELLVILLE - 2024 RAA GRANT MICRO SURFACING PROJECT - BID SHEET**

<b>Item No.</b>	<b>Description</b>	<b>Quantity</b>	<b>Units</b>	<b>Unit Price</b>	<b>Total Cost</b>
403B-000	Micro-Surfacing Seal Coat, Type II	<b>506</b>	<b>Ton</b>		
424A-346	Superpave Bituminous Concrete Wearing Surface Layer, Leveling, 1/2" Maximum Aggregate Size Mix, ESAL Range A/B)	<b>175</b>	<b>TON</b>		
424B-640	Superpave Bituminous Concrete Lower Binder Layer, Patching, 1" Maximum Aggregate Size Mix, ESAL Range A/B)	<b>335</b>	<b>TON</b>		
433A-000	Scrub Seal	<b>40,504</b>	<b>SQ. YD.</b>		
600A-000	Mobilization	<b>1</b>	<b>L.S.</b>		
622A-004	Manhole Covers Reset (Riser Ring Method)	<b>6</b>	<b>EA</b>		
641S-500	Valve Box Reset	<b>3</b>	<b>EA</b>		
701A-030	Solid White, Class 2T, Type A Traffic Stripe	<b>7</b>	<b>MILE</b>		
701A-034	Solid Yellow, Class 2T, Type A Traffic Stripe	<b>7</b>	<b>MILE</b>		
701C-001	Solid Temporary Traffic Stripe	<b>13</b>	<b>MILE</b>		
703A-004	Traffic Control Markings, Class 2T, Type A	<b>980</b>	<b>SF</b>		
705A-037	Pavement Markers, Class A-H, Type 2-D	<b>440</b>	<b>EA</b>		
740B-000	Traffic Control Items	<b>1</b>	<b>L</b>		
<b>TOTAL:</b>					