



CONTRACT DOCUMENTS / BID DOCUMENTS /SPECIFICATIONS

George Wallace Boulevard Paving Project 2025 RAA Grant

City of Muscle Shoals
Colbert County, AL

Prepared By:
Civil Group, LLC
919 E Avalon Avenue, Suite B, Muscle Shoals, AL 35661
P:256-320-5082 F:256-320-5082



ADVERTISEMENT FOR BIDS
THE CITY OF MUSCLE SHOALS
2010 E. AVALON AVE
MUSCLE SHOALS, ALABAMA 35661

FOR: GEORGE WALLACE BOULEVARD 2025 RAA GRANT PAVING PROJECT

Separate sealed bids for **George Wallace Boulevard 2025 RAA Grant Paving Project** will be received by the **City of Muscle Shoals** at City Hall at **2010 E. Avalon Avenue, Muscle Shoals, AL 35661** until **10:00 am CDST Tuesday, July 15, 2025** and then opened and read aloud.

The Information for Bidders, Form of Bid, Form of Contract, Specifications, and Forms of Bid Bond, Performance Bond, payment Bond, and other documents may be examined at the office of **Civil Group, LLC listed below.**

Copies may be obtained from the office of **Civil Group, LLC listed below** upon payment of **\$50.00** for each set. The Contractor should contact Civil Group, LLC to set up an appointment to obtain, or view a set of the bid documents.

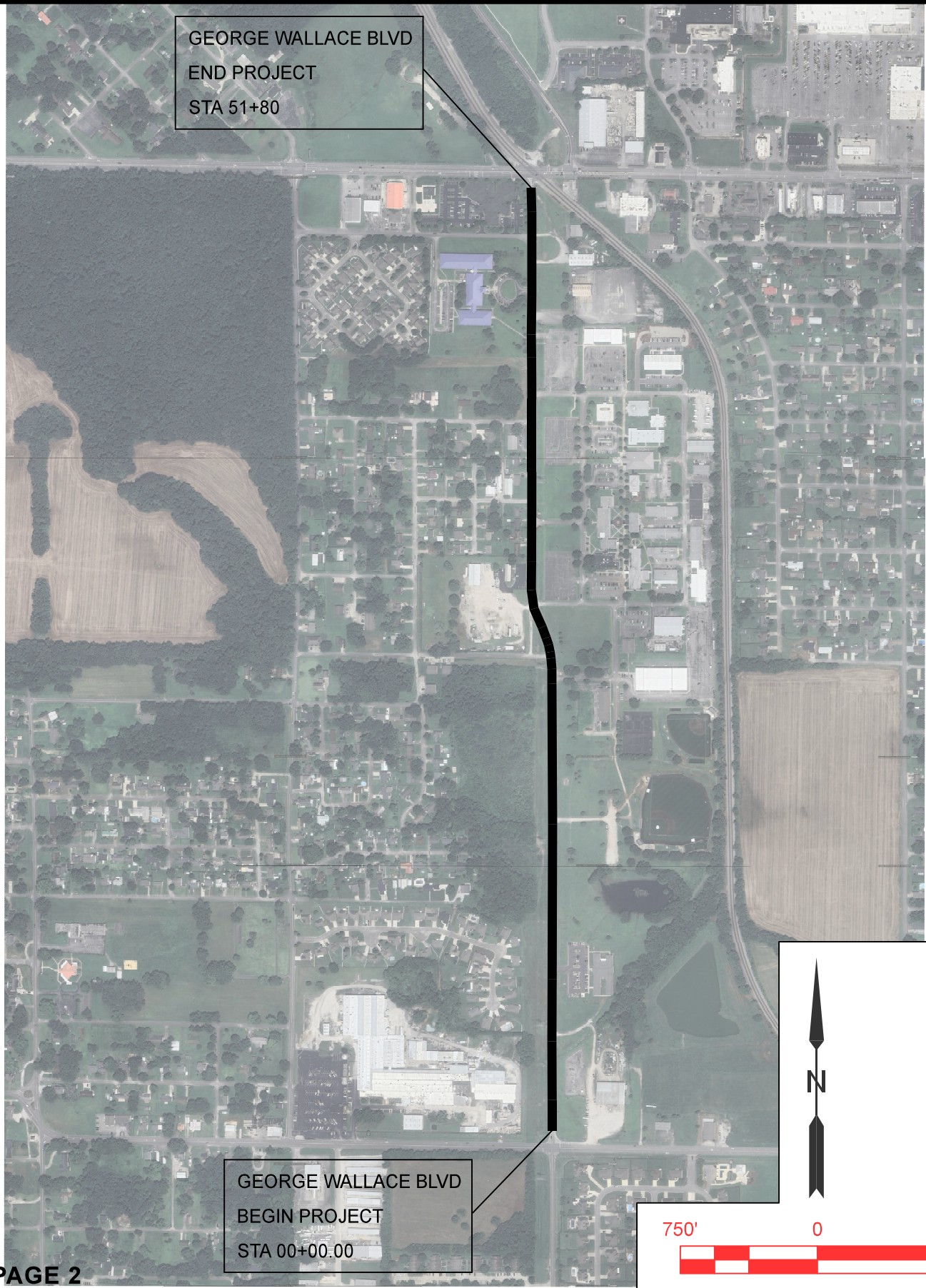
Civil Group, LLC
Alli Gower
919 East Avalon Avenue, Suite B
Muscle Shoals, AL 35661
Phone: 256-320-5082
Email: alli@gocivilgroup.com

All bids must be submitted on bid forms provided by the **City of Muscle Shoals through its Engineer.** Bids must be submitted to the City of Muscle Shoals in a sealed envelope marked **“Bid for George Wallace Boulevard 2025 RAA Grant Paving Project”**. The Bidder’s name and address shall appear on the outside of the sealed bid; and the Bidder’s General Contractor’s License Number and Expiration Date shall be listed on the outside of the sealed bid. The **City of Muscle Shoals** reserves the right to waive any informalities or reject any or all bids.

Each bidder must deposit with his bid, security in the amount, form, and subject to the conditions provided in the Information for Bidders.

No bidder may withdraw his bid within 30 days after the actual date of the opening thereof.

Mike Lockhart, Mayor



PAGE 2



CivilGroup
engineering • surveying

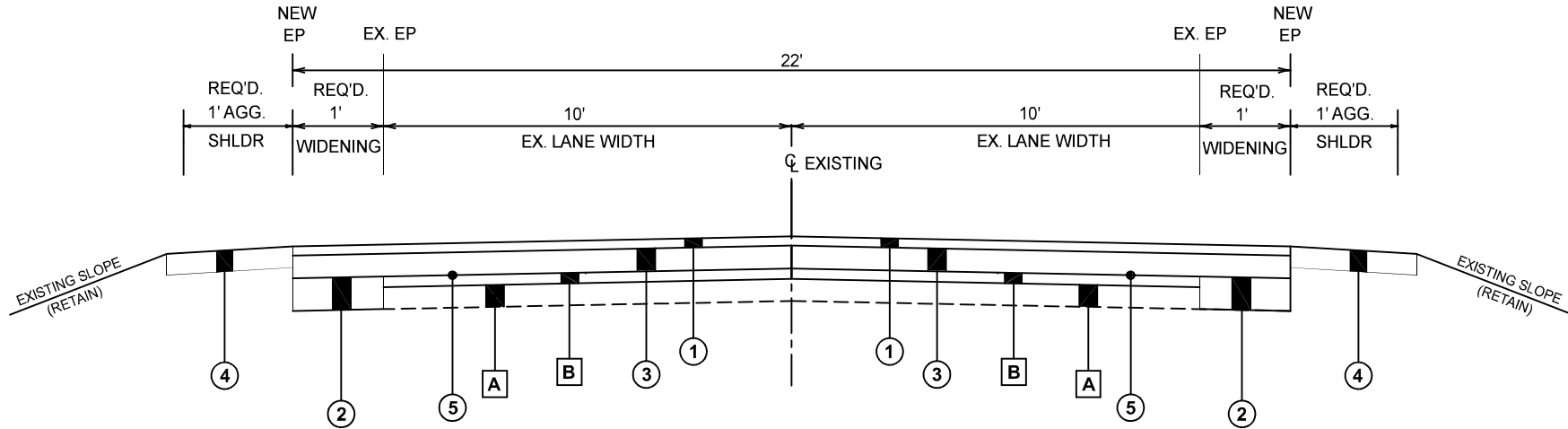
919 EAST AVALON AVE., SUITE B
MUSCLE SHOALS, ALABAMA 35661
P 256.320.5082 • F 256.320.5082

GEORGE WALLACE BLVD PAVING PROJECT

PROJECT STATIONING MAP

SCALE: 1"= 750'	DATE: 4/30/2025
JOB NO.: CG25-048	
SURVEYED BY: NA	
DRAWN BY: JCS	
CHECKED BY: BNW	
CRD.: NA	

**TYPICAL SECTION
GEORGE WALLACE BLVD
(FROM 6TH ST TO AVALON AVE)
STA 0+00 TO STA 51+75**



LEGEND NO.	ITEM NO.	DESCRIPTION
A		"IN PLACE" EXISTING SUBGRADE / BASE (RETAIN)
B		"IN PLACE" EXISTING ASPHALT PAVEMENT (RETAIN)
①	"REQUIRED" 424A-340	REQD ITEM NO.424A-340 SUPERPAVE BITUMINOUS CONCRETE WEARING SURFACE LAYER, 1/2" MAXIMUM AGGREGATE SIZE MIX, ESAL RANGE A/B (APPROX. 150 LBS/SY)
②	"REQUIRED" 424B-647	REQD ITEM NO.424B-647 SUPERPAVE BITUMINOUS CONCRETE UPPER BINDER LAYER, WIDENING, 1" MAXIMUM AGGREGATE SIZE MIX, ESAL RANGE A/B (APPROX. 350 LBS/SY)
③	"REQUIRED" 424B-665	REQD ITEM NO.424B-665 SUPERPAVE BITUMINOUS CONCRETE LOWER BINDER LAYER, 3/4" MAXIMUM AGGREGATE SIZE MIX, ESAL RANGE A/B (APPROX. 225 LBS/SY)
④	"REQUIRED" 430B-047	REQD ITEM NO. 430B-047 AGGREGATE SURFACING (3/4" DOWN, CRUSHER RUN)
⑤	"REQUIRED" 433A-000	REQD ITEM NO.433A-000 SCRUB SEAL

NOT TO SCALE

PAGE 3

Item No.	Description	Quantity	Units
206C-010	Removing Concrete Driveway	14	SY
206D-003	Removing Curb And Gutter	20	LF
206D-004	Removing Railroad Tracks	52	LF
405A-000	Tack Coat	915	Gal
424A-340	Superpave Bituminous Concrete Wearing Surface Layer, 1/2" Maximum Aggregate Size Mix, ESAL Range A/B)	1,056	TON
424B-640	Superpave Bituminous Concrete Lower Binder Layer, Patching, 1" Maximum Aggregate Size Mix, ESAL Range A/B)	563	TON
424B-642	Superpave Bituminous Concrete Upper Binder, Leveling, 1/2" Maximum Aggregate Size Mix, ESAL Range A/B)	100	TON
424B-647	Superpave Bituminous Concrete Upper Binder, Widening, 1" Maximum Aggregate Size Mix, ESAL Range A/B)	208	TON
424B-665	Superpave Bituminous Concrete Lower Binder Layer, 3/4" Maximum Aggregate Size Mix, ESAL Range A/B)	1,471	TON
430B-047	Aggregate Surfacing (3/4" Down, Crusher Run)	534	TON
433A-000	Scrub Seal	13,075	SQ. YD.
600A-000	Mobilization	1	L.S.
701A-030	Solid White, Class 2T, Type A Traffic Stripe	2	MILE
701A-034	Solid Yellow, Class 2T, Type A Traffic Stripe	2	MILE
701C-001	Solid Temporary Traffic Stripe	6	MILE
703A-004	Traffic Control Markings, Class 2T, Type A	348	SF
703B-004	Traffic Control Legends, Class 2T, Type A	134	SF
705A-037	Pavement Markers, Class A-H, Type 2-D	134	EA
740A-000	Traffic Control Scheme	1	L.S.

PAGE 4



CivilGroup
engineering • surveying

919 EAST AVALON AVE., SUITE B
MUSCLE SHOALS, ALABAMA 35661
P 256.320.5082 • F 256.320.5082

GEORGE WALLACE BLVD PAVING PROJECT

SUMMARY OF QUANTITIES

SCALE: 1"= DATE:

JOB NO.:

SURVEYED BY:

DRAWN BY:

CHECKED BY:

CRD.: